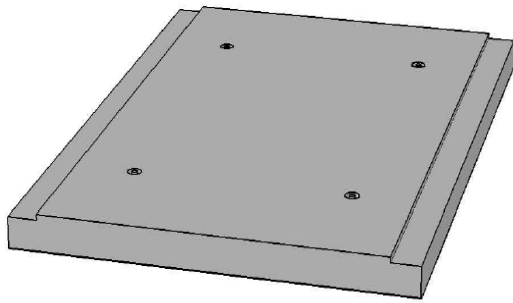
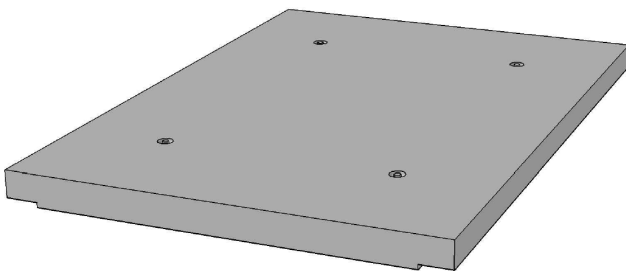


# BASE PLATES/LINK SLABS

- Base Plates/Link Slabs available for most sizes of Box Culverts.
- Base plates prevent undesirable sinking
- Remove the need for footings or to pour on site with pre-cast ease.
- Additional sizes may be available.



Base Plate example



Link Slab example

CODE	WIDTH MM	LENGT H MM	APPROX. WEIGHT
4840	300	2500	320kg
4841	450	2500	450kg
4842	600	2400	580kg
4843	900	2500	865kg
4845	1200	2500	1150kg
4846	1500	2500	1700kg
4847	1800	1800	1580kg
4848	1800	2400	2210kg
4849	2100	1800	2010kg
4850	2100	2400	2740kg
4851	2400	1800	2470kg
4852	2400	2400	3270kg
4853	2700	1800	3040kg
4854	2700	2400	4210kg
4855	3000	1800	3878kg
4856	3000	2400	5170kg